

Name _____ Quiz Date _____

Cellular Exchange Quiz Review

The quiz will include multiple choice, true and false, cell diagram labeling, and short answer questions.

Raw materials cell membrane cellular exchange semipermeable waste

- _____ means that only some substances can pass through.
- Cells exchange materials through the _____.
- The process of a cell bringing materials in and out of the cell is _____.
- _____ comes into a cell and _____ goes out.

Osmosis diffusion high low

- _____ is the movement of gas or sugar particles from a high concentration to a _____ concentration
- _____ is the movement of water particles from a _____ concentration to a low concentration.

Active passive

- _____ transport requires energy.
- _____ transport does not require energy.

High low

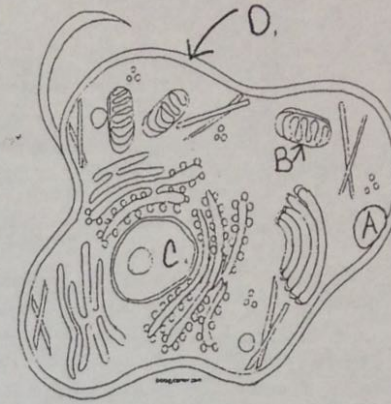
- _____ concentration means having a lot of material in a small area (crowded)
- _____ concentration means having materials spread out over a large area. (not crowded)

Endocytosis exocytosis

- _____ is when a large particle is brought into a cell.
- _____ is when a large particle is removed from a cell.

ATP channels

- The openings in a cell membrane are called _____.
- Energy in the form of _____ is made in the mitochondria.



- _____ A vesicle, which is a part of the cell membrane that surrounds large particles being moved in and out of a cell.
- _____ The cell membrane which controls what comes in and goes out of the cell.
- _____ The nucleus which controls all activities in the cell.
- _____ The mitochondria which is the production site of ATP.

19. How does putting a drop of food coloring into a glass of water demonstrate diffusion?

20. Describe the difference between high concentration and low concentration using the either orange juice or food coloring.
